

Catalog #C2010006, C2010007, P2010001, P2010020, P2010028, P2010029

**New Tacrolimus conjugates for immuno-detection and immuno-assay development are now exclusively available at Molecular Depot.**

## **Tacrolimus-(PEG)3-Biotin (C2010006)**

Tacrolimus is linked to Biotin via a short polyethylene glycol spacer arm.

## **Tacrolimus-(PEG)11-Biotin (C2010007)**

Tacrolimus is linked to Biotin via a long polyethylene glycol spacer arm.

## **Tacrolimus-BSA (P2010001)**

BSA is conjugated to Tacrolimus via a carbon spacer arm of 19.0 Å. Suitable for the immobilization of Tacrolimus on solid surfaces such as microplates, latex and gold nanoparticles and microparticles.

## **Tacrolimus-BSA-Biotin (P2010020)**

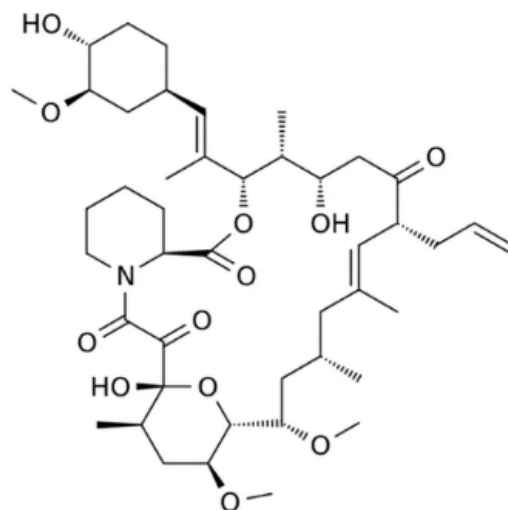
Biotinylated BSA conjugated to Tacrolimus via a carbon spacer arm of 19.0 Å. Suitable for the immobilization of Tacrolimus on solid surfaces using streptavidin/biotin interaction.

## **Tacrolimus-(PEG)3-Streptavidin (P2010028)**

Tacrolimus is linked to Streptavidin via a short (PEG)3 spacer arm.

## **Tacrolimus-(PEG)11-Streptavidin (P2010029)**

Tacrolimus is linked to Streptavidin via a short (PEG)11 spacer arm.



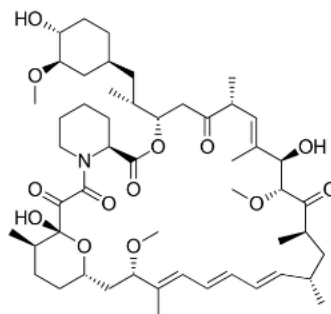
# Sirolimus & Everolimus Conjugates

Catalog # P2010025 and P2010024

---

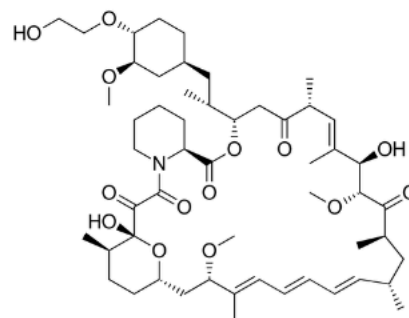
## Sirolimus-BSA (P2010025)

Concentrated solution of (BSA) conjugated to Sirolimus. A carbon spacer arm of 19.0 Å links BSA to the Sirolimus moiety. Each BSA molecule contains several Sirolimus units.



## Everolimus-BSA (P2010024)

Concentrated solution of (BSA) conjugated to Everolimus. A carbon spacer arm of 19.0 Å links BSA to the Everolimus moiety. Each BSA molecule contains several Everolimus units.



---

**MOLECULAR DEPOT**

[info@moleculardepot.com](mailto:info@moleculardepot.com)

7915 Silverton Ave #313,  
San Diego, CA 92126, USA  
Phone: 1-858-900-3210  
Fax: 1-858-437-9884

